



The Hashemite Kingdom of Jordan

PRESS/3rd Q. 2022
Date. 9.Jan.2023

Department of Statics: 23.1% unemployment rate during the third quarter of 2022

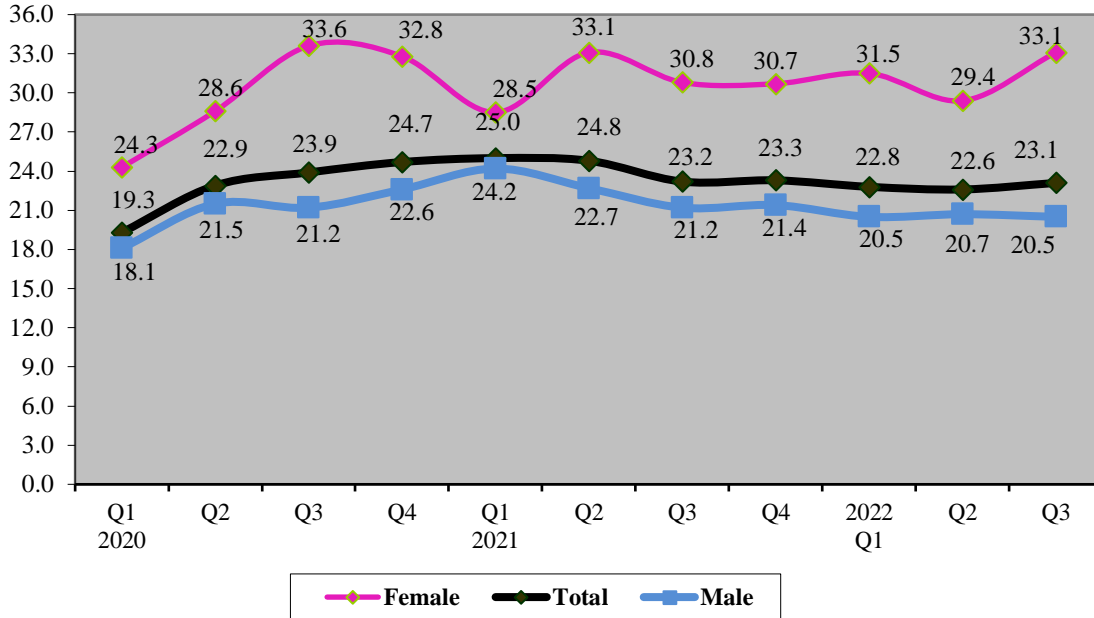
The Department of Statistics issued its quarterly report on the unemployment rate in the Hashemite Kingdom of Jordan for the 3rd quarter of 2022, and the following is a review of the most important results:

The unemployment:

- The unemployment rate during the 3rd quarter of 2022 reached (23.1%), recording a decrease of 0.1 percentage points compared to the same period of 2021, and recording an increase of 0.5 percentage points higher than the 2nd quarter of 2022.
- The unemployment rate for males during the 3rd quarter of 2022 was (20.5%) compared to (33.1%) for females. It is clear that males' unemployment rate decreased by 0.7 percentage points while the females' unemployment rate increased by 2.3 percentage points compared to the 3rd quarter of 2021.
- Comparing the unemployment rate in the 3rd quarter of 2022 with the second quarter of 2022, it is noticed that the male's unemployment rate

decreased by 0.2 percentage points while the females' unemployment rate increased by 3.7 percentage points.

Figure 1: Unemployment rates by sex and quarters for the years 2020 – 2022



Unemployed:

- The results showed that the unemployment rate was high among university degree holders (unemployed individuals who hold a bachelor's degree or higher, divided by the labor force for the same educational qualification), and the unemployment rate reached (29.3%) compared to other educational levels.
- The results indicated that (59.3%) of the total unemployed are holders of a secondary certificate or higher, and (40.4%) of the total unemployed had educational qualifications of under secondary school.
- The unemployed percentage varied based on the educational level and gender, as the percentage of unemployed males who are holding a bachelor's degree or higher was (29.5%) compared to (81.8%) for females.
- The unemployment rate among young people in the age group (15-24 years) reached 46.9% of the total unemployed (Total Rate= 42.1% for males compared to 67.5% for females).
- At the governorates level, the highest unemployment rate was recorded in Mafraq Governorate at a rate of 29.2%, and the lowest unemployment rate was recorded in Madaba Governorate at a rate of 16.8%.

Employed:

- Out of the total population, 25.4% of employed are within age group ≥ 15 years.
- Out of the employed males, 57.7% were with the age group (20-39 years), while the percentage of employed females in this age group reached 59.3%.
- 48.6% of the employed had educational qualifications below secondary, 10.0% secondary and 41.0% higher than secondary.
- The results showed that the majority of the employed (85.6%) are paid employees (Rate = 83.4% of males compared to 95.7% of females).

Labor force (Employed and Unemployed):

- The results showed a clear variance in the distribution of the labor force based on their educational level and gender. Of the total male labor force, 56.2% had educational levels of under secondary, compared to 10.4% for females. The results also indicated that 71.9% of the total female labor force had a bachelor's degree or higher, compared to 25.9% for males.

- The revised economic participation rate (the labor force attributed to the population aged ≥ 15 years) in the 3rd quarter of 2022 reached 33.0% (Rate= 52.5% for males compared to 13.7% for females) compared to 34.4% (54.4% for males and 14.5% for females) in same period of 2021.

It should be noted that the Labor Force Survey includes a sample of (16,560) households distributed across all Jordanian governorates and represents the urban and rural areas and the governorates.

The Labor Force Survey is conducted in the middle of each quarter of the year and provides data that reflects the reality of the entire quarter (July, August, September). Besides, according to the international recommendations approved in Jordan, the surveyed individual is asked if he searched for a job during the four weeks preceding the day of the interview.

Figure 1 Annual unemployment rate and the unemployment rate in the 3rd quarter of the years 2010-2022

