



المملكة الأردنية الهاشمية

The Hashemite Kingdom of Jordan

PRESS/ July.2019  
Date.19.Aug. 2019

## **0.2% the Average Increase of the Inflation Rate for July 2019 compared with the same month of 2018 (100=2010)**

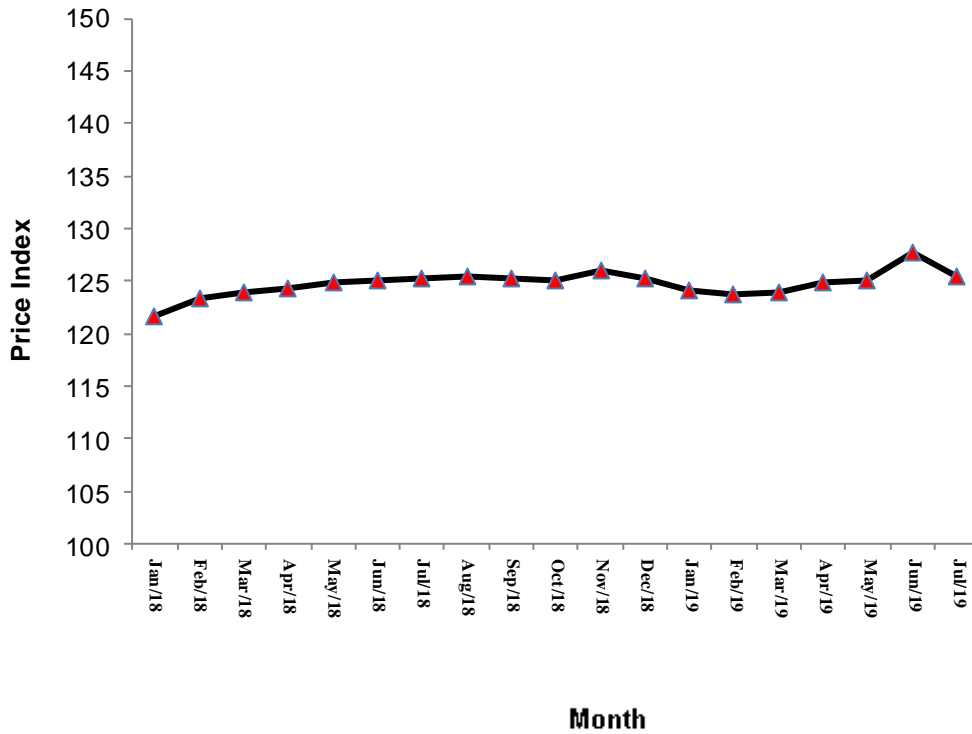
The monthly report on inflation in Jordan issued by the Department of Statistics indicates that the Consumer Price Average (Inflation) reached 125.55 in July 2019 against 125.30 during the same month of 2018 recorded an increase by 0.2%. The main commodities groups, which contributed to this increase, were “Rents” by 0.51 percentage points, “Meat & poultry” by 0.35 percentage points, “Cereals and its products” by 0.12 percentage points, “Education” by 0.07 percentage points and “Culture & Recreation” by 0.06 percentage points. Meanwhile, the main commodities groups which witnessed a decrease in their prices were “Transport” by 0.38 percentage points, “Dairy and its products and eggs” by 0.16 percentage points, “fuel and lighting” by 0.13 percentage points and “Tobacco and Cigarettes “ by 0.15 percentage points.

On the monthly level, the Consumer Price index for July 2019 has decreased by 0.1% compared with the previous month (June) 2019. The main commodities groups which contributed to this decrease were “Meat & poultry” by 0.15 percentage points, “Transport ” by 0.18 percentage points, “Fruits & Nuts” by 0.04 percentage points and “Sugar and its products and Fuel & lighting” by 0.02 percentage points for each . Meanwhile, the main groups which witnessed an increase in their prices were “Dairy and its products and eggs” by 0.12 percentage points, “Vegetables, Dried and Canned Legumes” by 0.11 percentage points, “Beverages” by 0.03 percentage points and “Oil & fats” by 0.02 percentage points.

The report also shows that the Consumer Price Average for the first seven months of 2019 has increased by 0.5% compared with the same period of 2018. The main commodities groups which contributed to this increase were “Vegetables, Dried and Canned Legumes” by 0.31 percentage points, “Rents” by 0.38 percentage points , “Cereals and their products” by 0.24 percentage points, “Education” by 0.10 percentage points and “Culture & Recreation” 0.03 percentage points. Meanwhile, the main commodities groups which witnessed a decrease in their prices were “Meat & Poultry” by 0.19 percentage points, “Transport” by 0.18 percentage points, “Dairy and its products and eggs” by 0.16 percentage points and “Tobacco and Cigarettes” by 0.07 percentage points.

As for the core inflation of the consumer Price index for July 2019 (which is calculated after excluding the most fluctuating commodities’ prices of food, fuel, lighting and transport group) it has reached 130.9 against 129.0 recording an increase of 1.5% during the same month of 2018. On the accumulative level the consumer price index for the first seven months of 2019 reached 129.7 against 128.1 compared with 2018 representing an increase by 1.3%.

**Fig 1: General Monthly CPI for 2018 &2019**



**Table 1: General CPI Monthly Index for 2018 and 2019 (100=2010)**

Month	Jan.	Feb.	Mar.	Apr.	May	June	July	Aug.	Sep.	Oct.	Nov.	Dec.
2018	121.67	123.46	123.99	124.28	124.93	125.07	125.30	125.48	125.25	125.09	126.12	125.25
2019	124.07	123.69	124.02	124.81	125.09	125.72	125.55					

**Table 2: Monthly & accumulative average change of the Consumer Price Index  
during 2018 and 2019 (100=2010)**

<b>Month</b>	<b>Jan.</b>	<b>Feb.</b>	<b>Mar.</b>	<b>Apr.</b>	<b>May</b>	<b>June</b>	<b>July</b>	<b>August</b>	<b>Sep.</b>	<b>Oct.</b>	<b>Nov.</b>	<b>Dec.</b>
<b>Year</b>												
<b>2018</b>												
<b>Monthly</b>	0.69	1.47	0.43	0.23	0.52	0.11	0.18	0.15	0.18-	0.13-	0.83	0.69-
<b>2018</b>												
<b>accumulative</b>	2.97	3.31	3.67	3.90	4.14	4.30	4.50	4.60	4.57	4.52	4.54	4.46
<b>2019</b>												
<b>monthly</b>	0.94-	0.30-	0.26	0.63	0.23	0.50	-0.13					

**Table 3: Average change in the accumulative core inflations for 2018 & 2019 (100=2010)**

<b>Month</b>	<b>Jan.</b>	<b>Feb.</b>	<b>Mar.</b>	<b>Apr.</b>	<b>May</b>	<b>June</b>	<b>July</b>	<b>Aug.</b>	<b>Sep.</b>	<b>Oct.</b>	<b>Nov.</b>	<b>Dec.</b>
<b>Year</b>												
<b>2018</b>	2.29	2.35	2.5	2.39	2.42	2.45	2.35	2.36	2.36	2.13	1.97	1.65
<b>2019</b>	1.61	1.36	1.23	1.18	1.18	1.21	1.25					