



المملكة الأردنية الهاشمية

The Hashemite Kingdom of Jordan

PRESS/June-2020
Date. 14.July .2020

0.61% the decrease of the Consumer Price Index for June 2020 compared with the same month of 2019 (100=2018)

The monthly report issued by the Department of Statistics indicates a decrease in the Consumer Price Index for June 2020 to reach 100.51 against 101.13 for the same month of 2019 recorded a decrease by 0.61%. This mainly was a result of a decrease in the price of Transportation by 0.99 percentage points, Fuels and Lighting by 0.70 percentage points, Rents by 0.33 percentage points, , Meat and Poultry by 0.21 percentage points, Clothing by 0.03 percentage points. Meanwhile, there was an increase in the price of Dairy Products and Eggs by 0.33 percentage points, Tobacco and Cigarettes by 0.28 percentage points, Fruits and Nuts by 0.22 percentage points and Education by 0.14 percentage points.

On a monthly level, the Consumer Price Index for June 2020 has reached 100.51 against 100.39 in May for the same year, recording an increase by 0.12%. This has resulted mainly from an increase in the price of Transportation by 0.70 percentage points, Tobacco and Cigarettes by 0.49 percentage points, Fuels and Lighting by 0.06 percentage points, Restaurants and Hotels by 0.05 percentage points and Cereals and its products by 0.02 percentage points. Meanwhile, there was a decrease in Vegetables and Legumes Dry and Canned by 0.58 percentage points, Fruits and Nuts by 0.25 percentage points, Rents by 0.17 percentage points and Meat and Poultry by 0.14 percentage points.

The report indicates that the CPI for the first half of 2020 has reached 101.18 against 100.28 for the same period of 2019 recording an increase of 0.90%. This mainly was a result of an increase in the price of Dairy Products and Eggs by 0.18 percentage points,

Vegetables and Legumes Dry and canned by 0.18 percentage points, Fruits and Nuts by 0.16 percentage points and Meat and Poultry by 0.14 percentage points. Meanwhile, there was a decrease in the price of Fuels and Lighting by 0.26 percentage points, Transportation by 0.12 percentage points, Clothing by 0.02 percentage points and Oils and Fats by 0.02 percentage points.

As for the core Consumer Price Index for June 2020 (which is measured by excluding the most fluctuated in price for the group of food, Fuels and Lighting and Transportation) it has reached 68.43 against 68.22 during the same month of 2019 recording an increase by 0.31%. On cumulative level the Consumer Price Index has reached 68.33 for the first half of 2020 against 67.59 compared with the same period of 2019, recording an increase by 1.10%.

Figure 1: Monthly CPI of 2019 and 2020

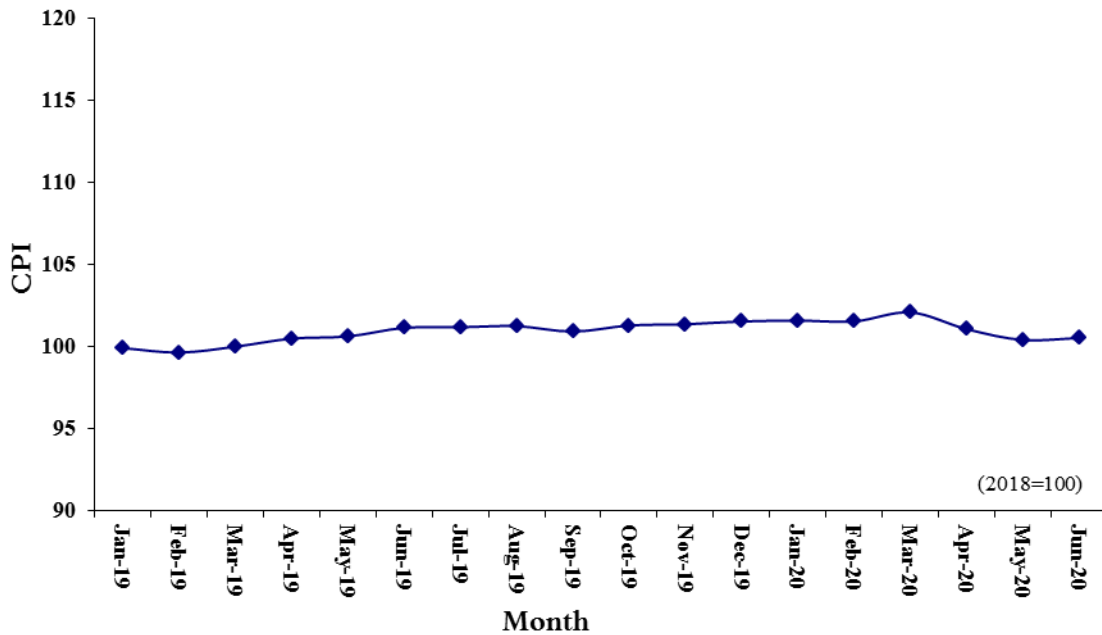


Table 1: Monthly Index Numbers for 2019 and 2020 (100=2018)

Month Year	Jan.	Feb.	Mar.	Apr.	May	June	Jul.	Aug.	Sep.	Oct.	Nov.	Dec.
2019	99.9	99.6	100.0	100.5	100.6	101.1	101.2	101.2	100.9	101.3	101.3	101.5
2020	101.6	101.5	102.05	101.05	100.39	100.51						

Table 2: The rate of change in the monthly and cumulative consumer prices for 2019 and 2020 (100=2018)

Month Year	Jan.	Feb.	Mar.	Apr.	May	June	Jul.	Aug.	Sep.	Oct.	Nov.	Dec.
2019 Monthly	0.67-	0.27-	0.35	0.49	0.13	0.52	0.04	0.07	0.33-	0.37	0.07	0.17
2020 Monthly	0.05	0.05-	0.52	0.98-	0.65-	0.12						
2020 Cumulative	1.68	1.79	1.88	1.55	1.20	0.90						

Table 3: The rate of change in the basic cumulative Index numbers for 2020 (100=2018)

Month Year	Jan.	Feb.	Mar.	Apr.	May	June	Jul.	Aug.	Sep.	Oct.	Nov.	Dec.
2020	1.01	1.13	1.19	.1.23	1.25	1.10						